

OUR LEGACY

Psalm 145:3-4

MAKING DISCIPLES FROM ONE
GENERATION TO ANOTHER



GlenMeadows
LIFE TOGETHER

Dear Church,



It is with great joy that I am writing you this letter asking all of you to join us as we celebrate the “Works of God from one generation to another” (Ps 145:3-4). As you know, we have purchased the property across Knickerbocker with the expectation of expanding our campus and thereby expanding our vision throughout the San Angelo community and beyond. Building a new facility is a major part of reaching more people for Christ.

Our next step is to seek the Lord to turn His mission and vision into a reality. I truly believe we will witness the hand of God move powerfully in this stage of our journey as we walk in unity (Acts 2:42-47).


There is no doubt this stage of our journey will require a unified effort of the whole church. Together, we must pray. When the body of Christ prays with one voice, we experience the blessing of God. Pray for a movement of sacrificial generosity among God’s people. Let’s build a Legacy together from one generation to another.

Because He Lives,

Mack Roller
Senior Pastor

A handwritten signature in black ink that reads "M. Roller". The signature is fluid and cursive, with a large, stylized "M" and a long, sweeping underline.

ROADMAP



1987 • Glen Meadows Mission was established with 11 members

1995 • Second morning service added

1998 • Construction of present auditorium

2008 • Over 200 new members join

2016 • Record number of baptisms

2020 • New building, new opportunities

SEE THE

THE BEGINNING

Glen Meadows began as a desire to establish a church on the south side of town. Supported by the churches of the Concho Valley Baptist Association and started with 11 members from Hillcrest Baptist Church, Glen Meadows first met in the FBC Lake House in 1987.



GROUNDBREAKING

The church leased 5 acres from the city of San Angelo and broke ground on their first building in 1991. The average attendance rose to 100 by 1992, and a second service was added to accommodate the growth.



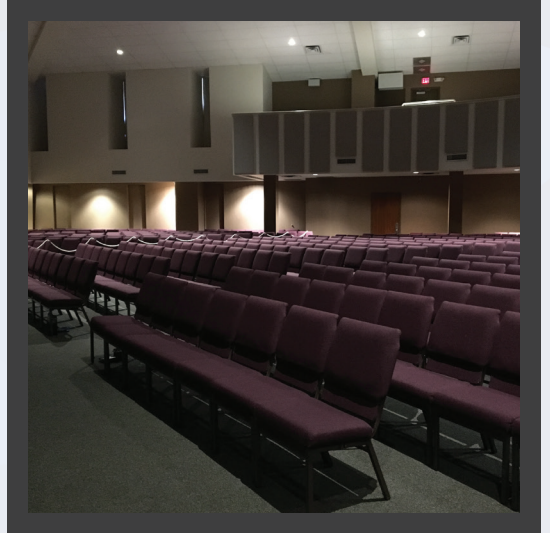
OUR FUTURE



LEGACY

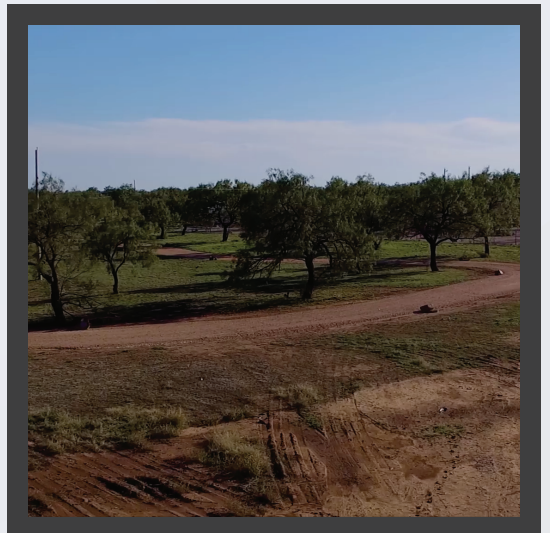
NEW WORSHIP AND EDUCATION SPACE

With the sanctuary regularly exceeding capacity, construction finished on our present auditorium in 1999. We completed our present education building in 2002 allowing us to have over 1,200 children, youth, and adults on campus regularly.



NEW LAND

With a desire to grow, Glen Meadows made the faith commitment to purchase 30 acres of land and began the process of new construction.



CONTINUE T

Our Vision: Glen Meadows exists to make disciples, who make disciples, by living LIFE together.

We do this best through...



LIFE Groups that meet in homes throughout the San Angelo area



Sunday School classes that meet every Sunday morning



Childrens, Youth, College & Young Adults, and Care Ministries



Mens, Womens, Adults, and Senior Adults Ministries



Leadership Training & Development

Imagine what Glen Meadows will do when
disciples are multiplying regularly!

“...breaking bread from house to house, they were taking their meals together with gladness and sincerity of heart, praising God and having favor with all the people. And the Lord was adding to their number day by day those who were being saved.” Acts 2:46-47

THE LEGACY

Our Mission: A commitment to the Great Commandment and the Great Commission will grow a great church.

The Lord has led Glen Meadows to continue to fulfill our mission outside its walls through...



Local Missions : Harvest Festival, Soup Kitchen, Kids Eat Free



National Missions : Turkeys for El Paso, Crossing Borders



Global Missions : East Asia, Guatemala



Leadership Development : LIFE Together Development & Training

Imagine God's power as Glen Meadows lives out the Great Commission in our daily lives.

"but you will receive power when the Holy Spirit has come upon you; and you shall be My witnesses both in Jerusalem, and in all Judea and Samaria, and even to the remotest part of the earth." Acts 1:8

BUILD THE

What has God done through Glen Meadows

Over the years, our worship space, children's space, education space, and parking have all been at their saturation point multiple times. The trend has been to grow until we hit a ceiling where our facilities cannot support our growth, and the process is repeated over and over again. Before us, we have an opportunity to break through these barriers!

As the body of Christ, we all...

Worship Together : 1,500 Members

Serve Together : 350 Active Leaders

Give Together : Financially support our mission, our ministries, and our facilities, giving sacrificially.

Impacting San Angelo



450

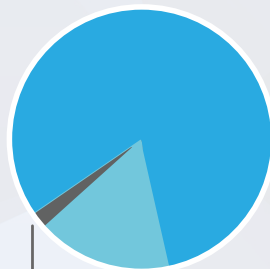
BAPTISMS SINCE 2008



1200 NEW MEMBERS
SINCE 2008

What God can do through us...

Because of Angelo State University and Goodfellow Air Force Base, San Angelo experiences a constant inflow of people. Additionally, less than 15% of our city attends church on a given Sunday. This creates a unique ministry opportunity for our church.



Glen Meadows attendees

San Angelo church attendees

Unengaged population of San Angelo

LEGACY

It is our strategy to grow smaller and larger at the same time. Acts 2:42-47

We grow smaller through our expanding small group ministries (LIFE Groups and Sunday School) in order to create disciple-making environments.

We grow larger by adding to our numbers those who are being saved. We gather as one church on Sunday mornings to minister to children, students, and adults. We need a large worship space for worship, fellowship, and the preaching of the Word, worship and fellowship. Our Sunday morning worship service provides a front door to over 300 new visitors each year, and that number has been growing.

Our vision includes ample space for children, a large commons area for connection and fellowship, an outdoor venue and an expandable worship space including 1,600 seats.

God has blessed us with a vision for the future and the means to achieve it!

- **NEW**
1,000+ seat
Worship Center
expandable to 1,600 seats
- **NEW**
25,900 sq. ft. dynamic
Children's Center
enough for 500+ kids at once
- **Education**
Space
- **Beautiful**
Outdoor Venues
- **Ample**
Parking Space



GOFF | COMPANIES

OXLEY WILLIAMS THARP

Front Facade

The main entrance will face Knickerbocker Road, offering an attractive facade to the thousands of cars that pass by daily.



GOFF | COMPANIES

OXLEY WILLIAMS THARP

Auditorium

The main worship center will have state of the art sound, lighting, and video support. It will include seats for 1,000+ people, expanding to 1,600 seats for future needs.



Outdoor Park

The area in front of the church, still visible to Knickerbocker, will highlight park benches and outdoor seating. Lake-front venues will be a wonderful place to hold picnics, weddings, and small concerts.



GOFF COMPANIES

OXLEY WILLIAMS THARP

Commons

The Commons area will support ample space for greeting and fellowship with coffee, seating, and a beautiful view of the patio.



 GOFF COMPANIES
OXLEY WILLIAMS THARP

Children's Area

The children's area will have plenty of space for learning, playing, and worship.

PRAYER WALK THE NEW LAND

Enjoy a time of prayer and solitude as you journey through the scriptures while praying for yourself, your family, and your church.

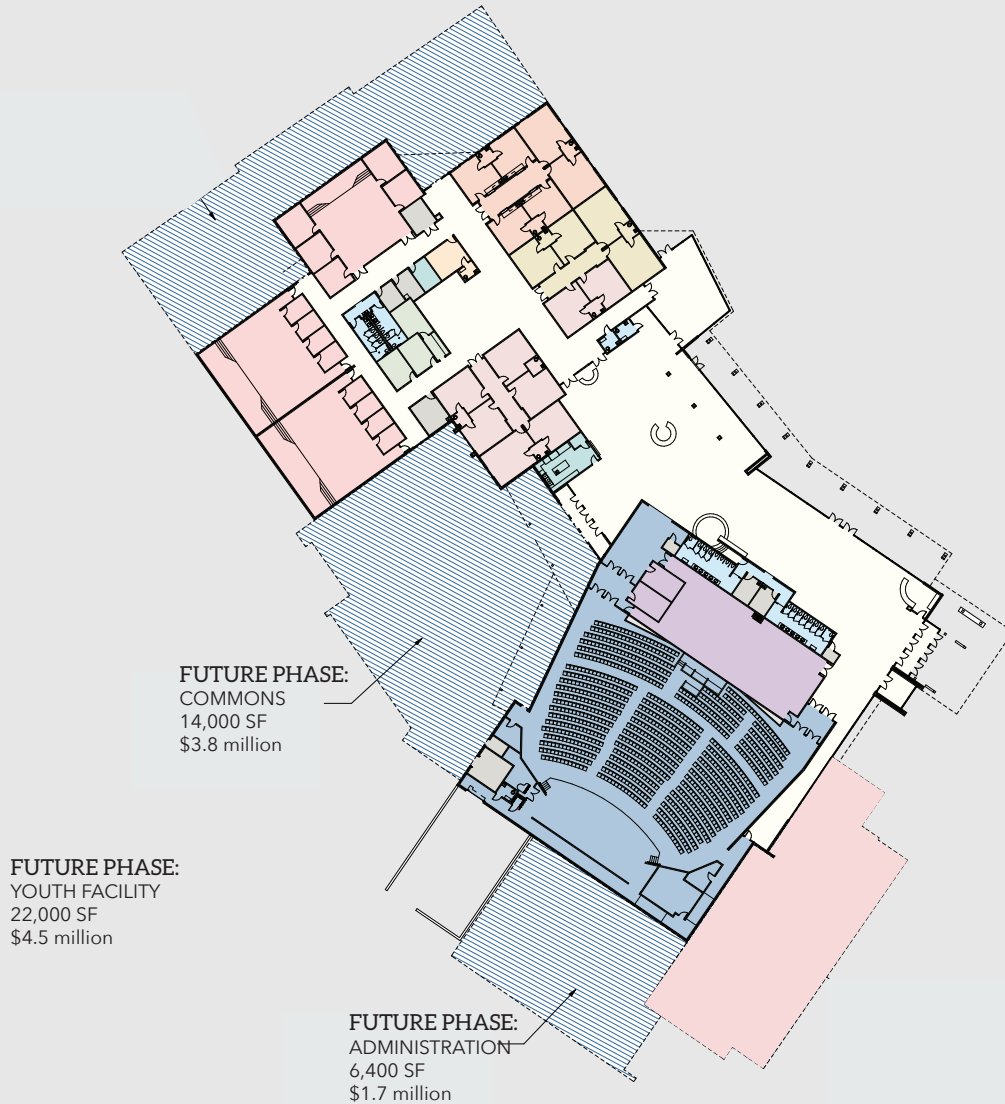


Phase I

Total Cost: \$14,668,000



Possible Future Phases



While this rendering serves as an overall concept, the final plans may vary from the final building as we discover programming needs.

JOIN THE LEGACY

We have the calling and vision to proclaim the wonderful works of God from generation to generation, resulting in lives being changed for the glory of God. We must commit to see that this happens, so we may continue to grow and expand His kingdom in our community.

What will it take to raise 14.668 million dollars?

We have the plan to make this calling and vision a reality.

Because we all have unique giving capabilities, we can't simply divide the total needed by the number of families in our church to determine an average gift. The following is a model of the distribution of gifts it will take for us to be successful. This also underscores the biblical principle of giving in proportion to what we have—and that's going to be different for all of us!

Number of Givers	Total Giving	Cumulative Total
1	\$3,000,000	\$3,000,000
1	\$1,000,000	\$4,000,000
2	\$500,000	\$5,000,000
4	\$250,000	\$6,000,000
7	\$100,000	\$6,700,000

Number of Givers	Monthly Giving	Individual Total 36 Months	Cumulative Total
14	\$2,000	\$72,000	\$7,708,000
18	\$1,800	\$64,800	\$8,874,400
20	\$1,250	\$45,000	\$9,774,400
24	\$1,000	\$36,000	\$10,638,400
26	\$675	\$24,300	\$11,270,200
31	\$500	\$18,000	\$11,828,200
38	\$400	\$14,400	\$12,375,400

Number of Givers	Monthly Giving	Individual Total 36 Months	Cumulative Total
45	\$350	\$12,600	\$12,942,400
47	\$250	\$9,000	\$13,365,400
55	\$150	\$5,400	\$13,662,400
80	\$85	\$3,060	\$13,907,200
165	\$42	\$1,512	\$14,156,680
200	\$20	\$720	\$14,300,680
Additional	\$10	\$360	\$14,668,465

Total Potential Commitments = \$14,668,465 or 100% of Total Goal

How can I be a part of what God is doing at Glen Meadows?

Pray: Ask God how He would use you to continue the legacy and advance His impact in our city, our region, and beyond.

Discuss: Engage in family conversation and discuss how God is leading each of you.

Talk: Meet with Pastor Mack to discuss what impact your gift can have on the total vision as well as to answer any questions.

Pledge: Commit to the amount God is leading you to give. Work it into your budget. Set up a direct debit. Continue to pray, and make it a part of your regular routine.

Maximize: There are plenty of ways to give towards God's vision for us - assets, bonds, stock... if you'd like to discuss various strategies for giving, email Pastor Mack (mack@gmbc.org).

